

What is Learning Catalytics?

Learning Catalytics (LC) is an in-class instantaneous feedback system which enables teachers to view students' responses and performance analyses in real time.

With LC, teachers are able to:

During class

- Assign in-class exercises to help students understand concepts and consolidate their knowledge
- Better understand students' performance and progress with the useful instantaneous feedback

After class

- Assign follow-up online exercises to cater for learner diversity

Supports multi-platforms

LC is compatible with many modern web-enabled devices — tablets, smartphones and PCs — without a need to install any software.

The system is supported by various platforms such as Windows, MacOS, iOS and Android.

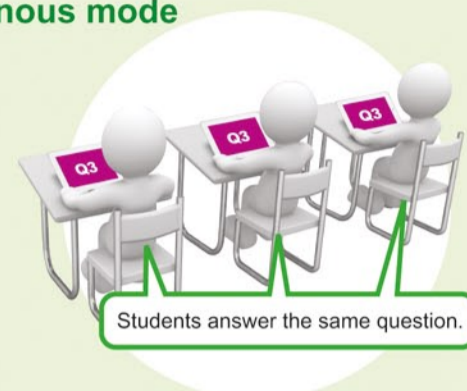


Offers various response modes

LC offers various response modes to suit different teaching needs:

1. Instructor-led synchronous mode (老師主導同步模式)

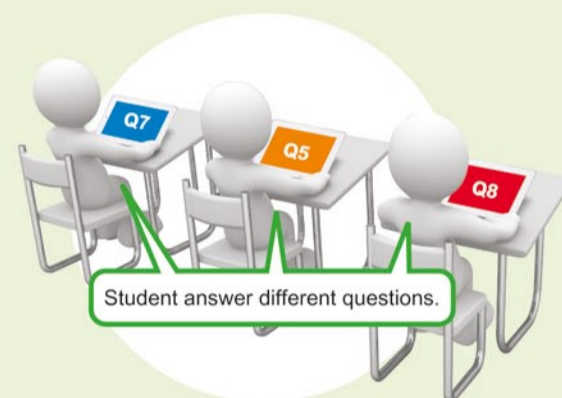
Teachers assign a single question each time and the whole class have to answer that question synchronously.



Students answer the same question.

2. Self-paced mode (自主模式)

Teachers assign multiple questions each time and students can answer questions at their own pace.



Student answer different questions.

Features 18 question types

LC offers a variety of question types to cater for the needs of different subjects!

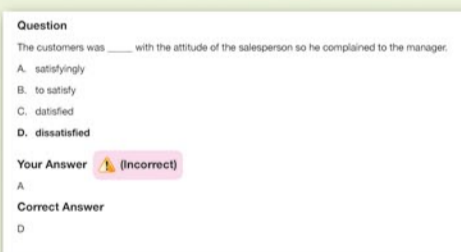
- Composite sketch ★
- Confidence
- Data collection
- Direction
- Expression
- Highlighting ★
- Image upload ★
- Long answer ★
- Many choices ★
- Matching ★
- Multiple choice ★
- Numerical
- Priority
- Ranking
- Region
- Short answer ★
- Sketch ★
- Word cloud ★

Teachers can embed a video to a question



Teachers can test students' understanding and get real-time feedback by using a Word Cloud question.

Teachers can address student's errors / unfamiliar words immediately



Most exercises are auto-marked.



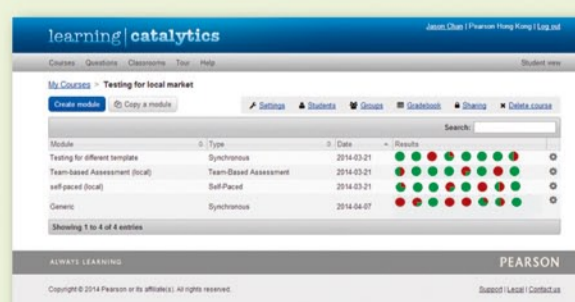
Teachers can view and respond to an individual student's performance.

★ Recommended for English language teaching

Extends learning

Teachers can assign after-class assessments to students according to their performance for extended learning and consolidation purposes.

Most assessments are auto-marked and provide students with instantaneous feedback to encourage self-learning.



Rich performance analysis is provided to help teachers monitor students' overall progress.

Pearson Hong Kong
18th Floor, Cornwall House, Taikoo Place,
979 King's Road, Quarry Bay, Hong Kong
Tel: (852) 3181 0123
Fax: (852) 2516 6860
E-mail: hkcs@pearson.com

Pearson Macau
Av. Praia Grande, Ed. China Plaza,
762-804, 14 Andar F, Macau
Tel: (853) 2837 1156
Fax: (853) 2837 1152
E-mail: macauoffice@pearson.com

Website : www.pearson.com.hk